



SEDAN

ELECTRIC VEHICLE

GITICONTROL SERIES

GitiSport GTR3

The GitiSport GTR3 is a track day tire designed for driving enthusiasts who demand race-inspired performance with street legality.

RIM SIZE

17 - 20"

ASPECT RATIO

17 - 20"

SPEED RATING

W - Y



EXCEPTIONAL HANDLING



PRECISE CONTROL



TIRE FEATURES

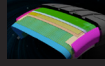
COMPOUND DERIVED FROM MOTORSPORTS



ENHANCED MATERIAL PERFORMANCE

Specially designed compound mix for motorsports. Formulated to strike a balance between racetrack performance and everyday usability.

PRECISE HANDLING



STRENGTHENED CASING STRUCTURE

Reinforced with Rayon and Aramid materials. Maintains casing structure stability across varying speed. High-Speed superb stability.

HIGHER LATERAL G FORCE RESISTANCE



HIGHER LATERAL G FORCE RESISTANCE

Able to withstand High Lateral G Forces generated during turning, while maintaining stability and enhancing braking performance.

SUPER FLAT CONTOUR



SUPERB TIRE-ROAD CONTACT OPTIMIZED PRESSURE DISTRIBUTION

Enhanced steering precision, increased braking and stopping power.



WIDE-ANGLE SLANT PATTERN BLOCK

Reduces tire deformation, enhances pattern blocks stiffness and optimizes braking performance.

SUPERB STABILITY AT HIGH SPEEDS



SUPERB STABILITY AT HIGH SPEEDS

Specially designed compound mix for motorsports. Formulated to strike a balance between racetrack performance and everyday usability.

TIRE SPECIFICATIONS

SIZE	SPEED RATING	LOAD INDEX	EU TIRE LABEL				
			RR	Wet Grip	Noise Db	Noise Grade	
18	255/35R18	W	94	E	C	72	B
	265/35R18	W	97	E	C	72	B
19	245/35R19	Y	93	E	C	72	C
	265/35R19	(Y)	98	E	C	72	B
	305/30R19	(Y)	102	E	C	74	B
	325/30R19	(Y)	101	E	C	74	B
20	265/35R20	(Y)	95	E	C	72	B
	295/30R20	(Y)	101	E	C	74	B