



SEDAN

ELECTRIC VEHICLE

GITISYNERGY SERIES

GitiSynergy H2

The GitiSynergy H2 is made for mid to high-range vehicles, offering long-lasting comfort, safety, and fuel savings.

RIM SIZE

14 - 20"

ASPECT RATIO

50 - 70"

SPEED RATING

T - W



WET DRIVING SAFETY



SMOOTH DRIVING



ADVANZTECH EV READY



ENERGY SAVING AND ENVIRONMENTALLY FRIENDLY



TIRE FEATURES

LOW NOISE & SMOOTH RIDING



OPTIMIZED PATTERN BLOCK

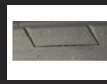
Optimized pattern block geometry and sequence reduce noise and improve driving smoothness



OPTIMIZED TIRE PATTERN & COMPOUND

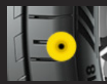
Specialised tire pattern and compound contribute to lower rolling resistance. A-rating for rolling resistance in selected sizes.

SAFETY IN WET CONDITIONS



LARGE CENTRE BLOCKS

Large centre blocks with 3D tread grooves deliver improved grip for better driving safety, even on the wettest roads



SUPER FLAT CONTACT (SFC) TECHNOLOGY

New Super Flat Contact (SFC) echnology increases tire contact area with the road. Reduction in tire deformation. Reduction in shoulder wear, extending tire life

EXCEPTIONAL WATER DRAINAGE



WIDE GROOVES

Wide groove design provides exceptional water drainage. Additional 4th groove for sections >195



INNOVATIVE TIRE COMPOUND

Innovative new tread compound delivers extremely short braking distances, achieving an "A" Wet Label grade. Improvement of 4% in aquaplaning resistance when compared to previous generation

TIRE SPECIFICATIONS

SIZE	SPEED RATING	LOAD INDEX	EU TIRE LABEL				
			RR	Wet Grip	Noise Db	Noise Grade	
14	185/60R14	H	82	D	A	70	B
	165/70R14	T	81	D	A	70	B
15	185/65R15	T	92	C	A	71	B
	195/65R15	H	91	C	B	71	B
	195/65R15	V	91	C	B	71	B
	195/65R15	H	95	C	B	71	B
	185/60R15	H	88	C	A	71	B
	195/55R15	V	85	D	A	71	B
	16	215/60R16	V	99	D	B	72
225/55R16		W	99	B	B	71	B
205/55R16		W	91	C	A	71	B
205/55R16		V	91	C	A	71	B
175/60R16		H	82	D	A	70	B
215/65R16		H	98	C	A	71	B
17	225/65R17	V	102	C	A	71	B
	215/55R17	H	98	B	A	69	A
	215/50R17	V	95	B	B	71	B
	205/55R17	H	95	B	B	71	B
	195/60R17	V	90	B	B	71	B
18	235/60R18	W	107	B	A	71	B

TIRE SPECIFICATIONS

	SIZE	SPEED RATING	LOAD INDEX	EU TIRE LABEL			
				RR	Wet Grip	Noise Db	Noise Grade
20	235/50R20	T	100	-	-	-	-